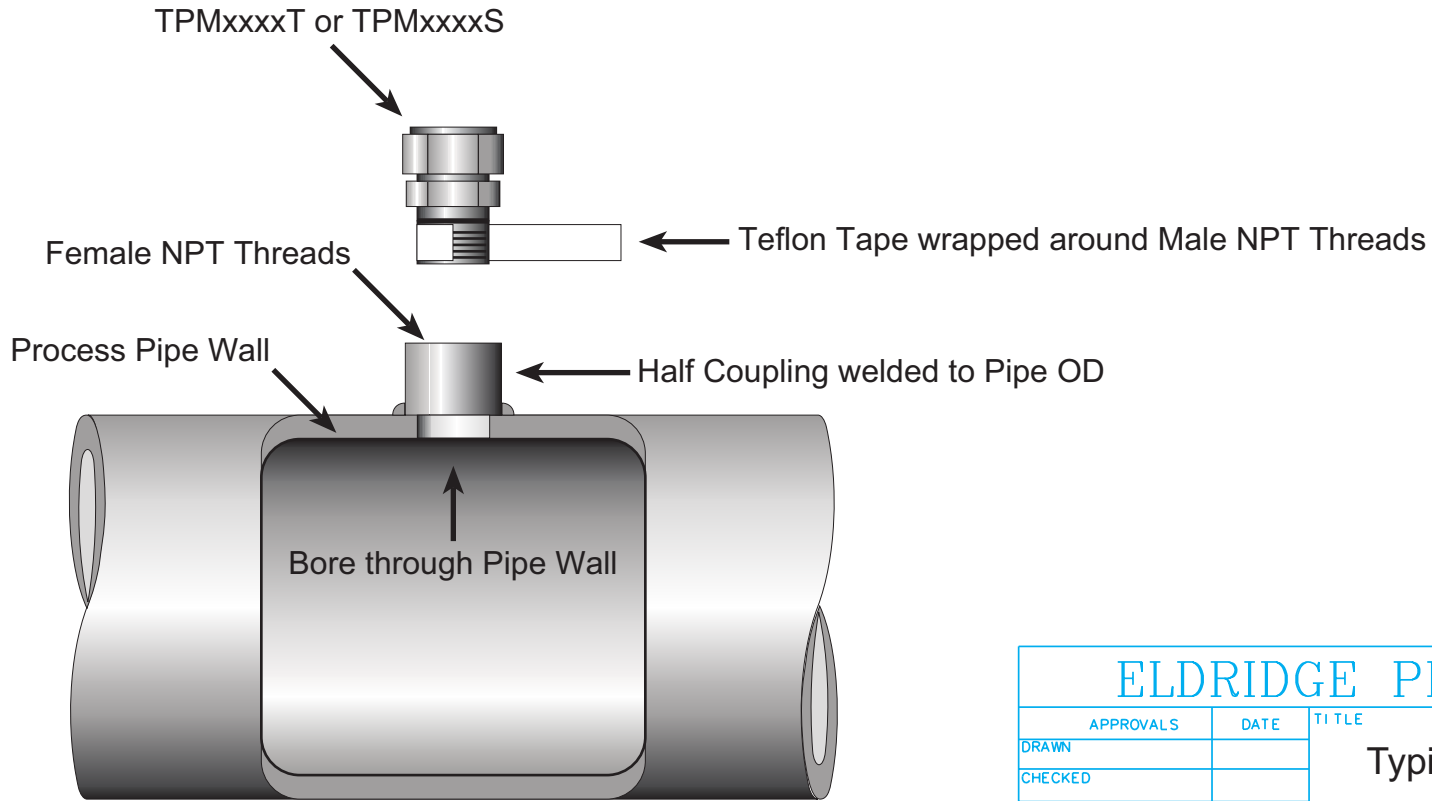
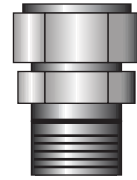


ELDRIDGE PRODUCTS, INC. PROPRIETARY AND CONFIDENTIAL INFORMATION ARE CONTAINED HEREIN. POSSESSION OF THIS DOCUMENT AND/OR INFORMATION DOES NOT CONVEY ANY RIGHT IN OR LICENSE TO USE OR REPRODUCE THE SPECIFICATIONS OR TECHNOLOGY OR INFORMATION DISCLOSED HEREIN NOR TO DISCLOSE SAID TO OTHERS WITHOUT THE WRITTEN CONSENT OF ELDRIDGE PRODUCTS, INC.

ZONE		REV	REVISIONS	DATE	APPROVED
			DESCRIPTION		

Typical installation of TPMxxxxT or TPMxxxxS:

- Step 1: Weld Half Coupling (with Female NPT Threads) to Pipe OD.
- Step 2: Bore hole for flowmeter probe assembly through Pipe Wall using Half Coupling as guide.
- Step 3: Wrap Teflon Tape around Male NPT Threads on TPM.
- Step 4: Thread TPM into Half Coupling.
- Step 5: Insert Probe to proper position.
- Step 6: Tighten TPM to Probe.



ELDRIDGE PRODUCTS, INC.					
APPROVALS	DATE	TITLE			
DRAWN		Typical TPM Installation			
CHECKED					
ENGR					
DESIGN					
		SIZE	REV CODE	DWG. NO.	REV
				TPMinstall	
		SCALE			SHEET OF